

# WINDOWS

## SINGLE HUNG WINDOW

# ES-MX1000

The ES-MX1000 is a single hung window that can be adapted to any architectural design. The system follows strict construction specifications and architectural standards of safety and durability. This window system can be implemented in residential and commercial construction projects.

### System Description

- Maximum width (Equal): 53 1/8" width x 63" height
- Maximum height (Equal): 74 1/4" height x 42" width
- Maximum width (Unequal): 53 1/8" width x 50 5/8" height
- Maximum height (Unequal): 74 1/4" height x 26 1/2" width
- Frame depth: 2 3/8"
- Flange frame available
- Designed for 5/16" annealed and heat strengthened glass options
- LMI and SMI
- Configuration: OX
- Tested water infiltration: 12 psf.
- Tested design load:
  - +80/-90 psf. (LMI)
  - +80/-120 psf. (SMI)
- Laminated glass:
  - 1/8" ANN + 0.09 PVB + 1/8" ANN
  - 1/8" HS + 0.09 PVB + 1/8" HS
- U-value: 1.04 on clear laminated SB 70
- SHGC: 0.29 on clear laminated SB 70

### Features

- Low-E Solarban 70 available
- Screen option available
- Block and tackle and ultra-lift balance options
- White and bronze aluminum finishes
- Sweep lock and vent latch handles available
- Heavy-duty meeting rail available



# Colors & Finishes



BRONZE



WHITE



# Accessories

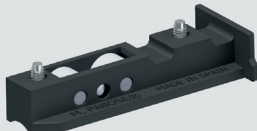
Every Multimax window and door benefits from a combination of premium materials, cutting-edge production technology and the talent of an experienced team. All of these result in precise stylish designs that will endure over time.



Vent Latch  
ES-MX1000  
ES-MX2000



Sweep Lock  
ES-MX1000  
ES-MX2000



Horizontal Roller  
ES-MX2000



Involute  
ES-MX4000



Roller  
ES-MX4000